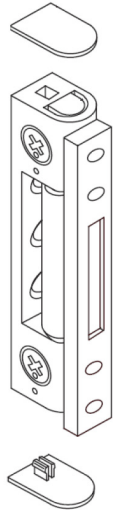


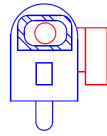


How To Identify A Door Hinge

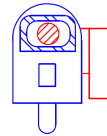
Please Note: If a picture can be obtained it will help us to identify the product more accurately and quicker.



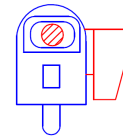
Butt Hinge



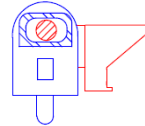
0 Degree



5 Degree



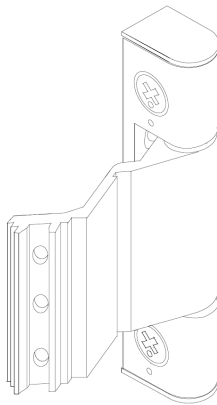
15 Degree



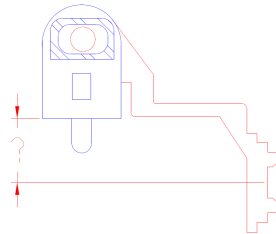
45 Degree (Rehau Hinge)

Colour:

Hinge Dimensions: (Length, width ETC.).....



Rebate Hinge



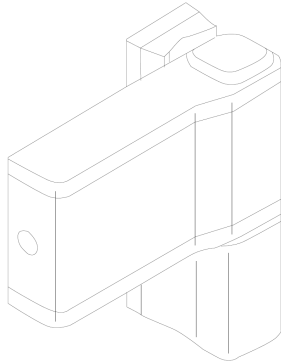
Rebate Hinge Measurement, The most common are 9 & 13mm. An 11mm version is available as well as ones that fit certain uPVC profiles. It is advisable to have a picture and measurements of the hinge based on the Butt hinge but the measurements must include the dimension above.

Colour:

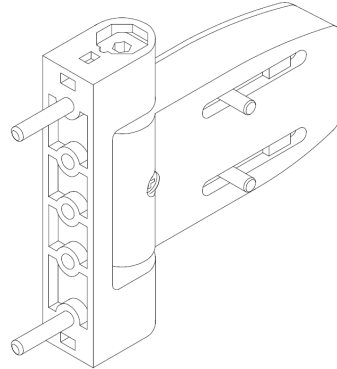
Hinge Dimensions: (Length, width ETC.).....



How To Identify A Door Hinge



Standard Flag Hinge



Flag Hinge Variant

Colour:.....

Dimensions: I.E. Length of flag, Height, Width, Screw Port measurements.....

Picture - In some cases it is possible to identify a hinge certain hinge type by its design. We would still need the measurements in order to identify the hinge.

Flag Hinge Step (IMPORTANT) - this measurement is important when requesting a flag hinge:

